

2.0" 5x7 Bi-Color Dot Matrix Display

FEATURES

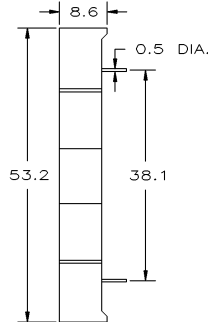
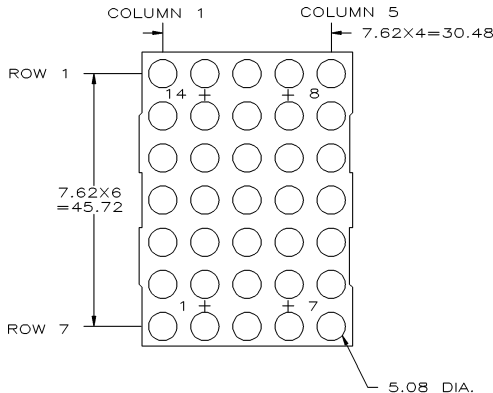
- 2.0 5x7 dot matrix display
- Grey surface/white epoxy color

OPTO-ELECTRICAL CHARACTERISTICS (Ta = 25°C)

PART NO.	EMITTED COLOR	PEAK WAVE LENGTH (nm)	MAXIMUM RATINGS			OPTO-ELECTRICAL CHARACTERISTICS						PIN-OUT		
			IF (mA)	VR (V)	PD (mW)	VF(V)			IR(μA)		IV(μcd)			
						typ.	max.	@mA	max.	@VR	typ. per seg.		@mA	
MTAN6220-42	(HR)	Hi-Eff Red	635	30	5	85	2.1	3.0	20	100	5	5900	10	1
	(G)	Green	567	30	5	85	2.1	3.0	20	100	5	5100	10	1

Operating Temperature: -25~+85, Storage Temperature: -25~+100. Other face/epoxy colors are available.

PACKAGE DIMENSIONS AND PIN FUNCTIONS

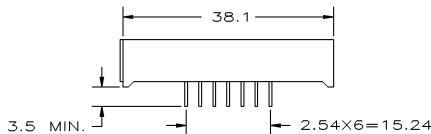


PINOUT 1

COLUMN CATHODE

PIN NO. FUNCTION

1. ANODE ROW 5
2. ANODE ROW 7
3. CATHODE COLUMN 2 (HR)
4. CATHODE COLUMN 3 (HR)
5. ANODE ROW 4
6. CATHODE COLUMN 5 (HR)
7. ANODE ROW 6
8. ANODE ROW 3
9. ANODE ROW 1
10. CATHODE COLUMN 4 (HR)
11. CATHODE COLUMN 3 (HR)
12. ANODE ROW 4
13. CATHODE COLUMN 1 (HR)
14. ANODE ROW 2



1. ALL DIMENSIONS ARE IN mm, TOLERANCE IS ± 0.25 mm UNLESS OTHERWISE SPECIFIED.
2. THE SLOPE ANGLE OF ANY PIN MAY BE $\pm 5.0^\circ$ MAX.



120 Broadway • Menands, New York 12204

Toll Free: (800) 98-4LEDS • Fax: (518) 432-7454

For up-to-date product info visit our web site at www.marktechopto.com

All specifications subject to change.